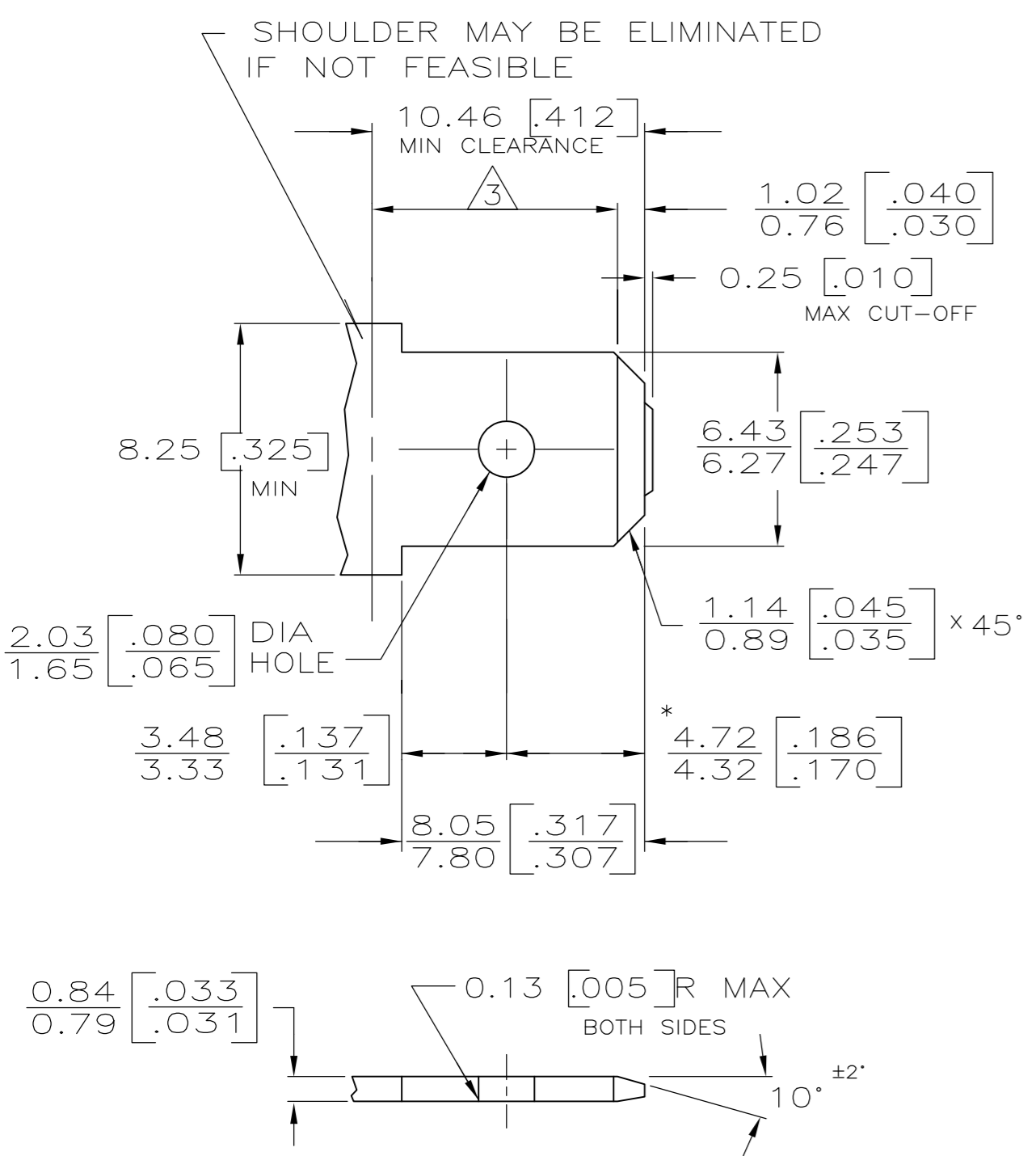


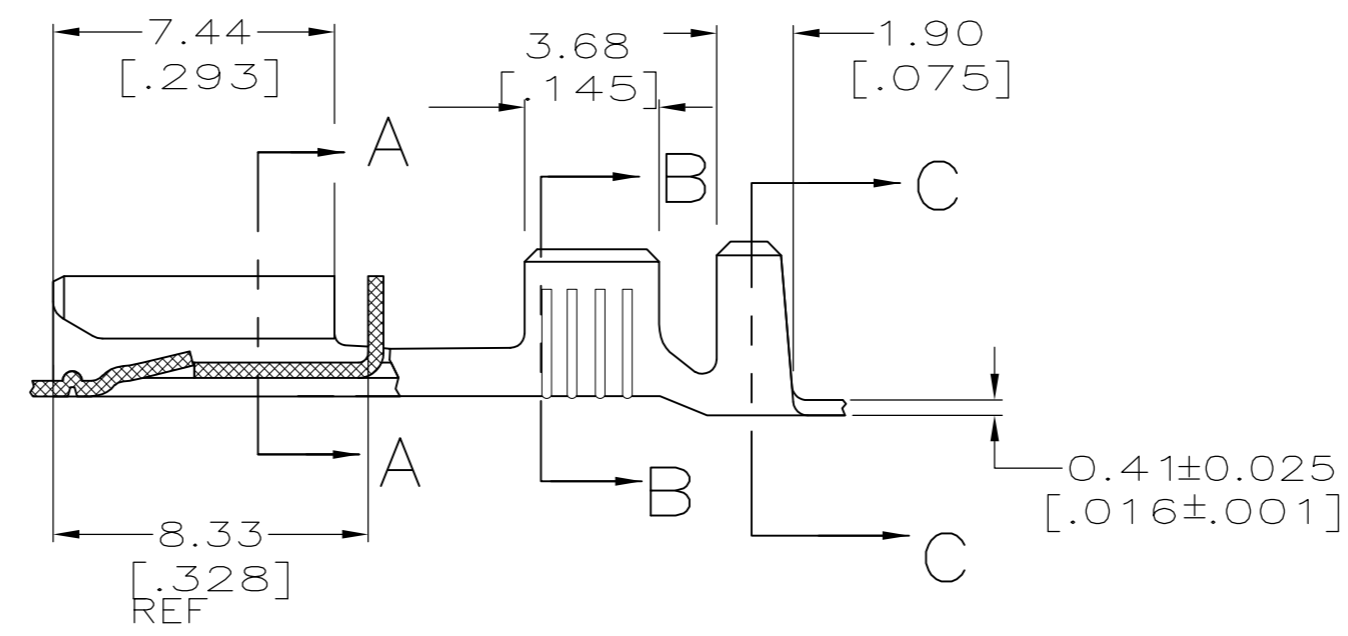
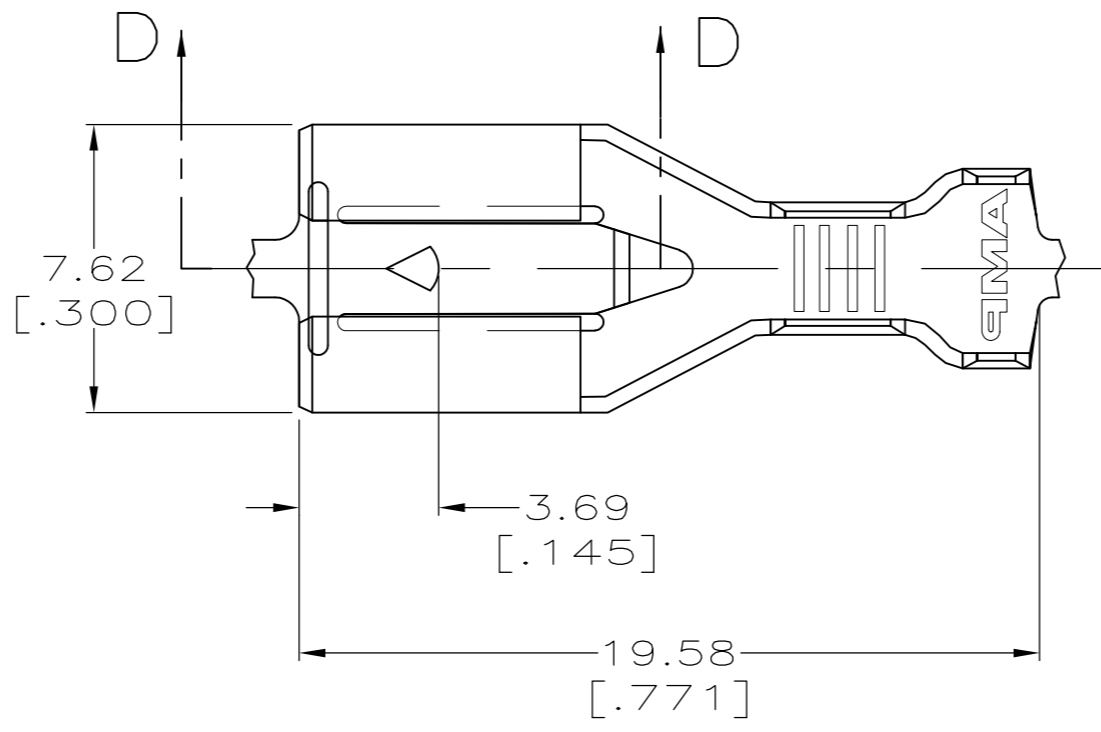
THIS DRAWING IS UNPUBLISHED. RELEASED FOR PUBLICATION
 © COPYRIGHT - By - ALL RIGHTS RESERVED.

LOC	DIST	REVISIONS			
P	LTR	DESCRIPTION	DATE	DWN	APVD
AF	50	N1	REVISED PER ECO - 13-006421	12APR13	JR KR

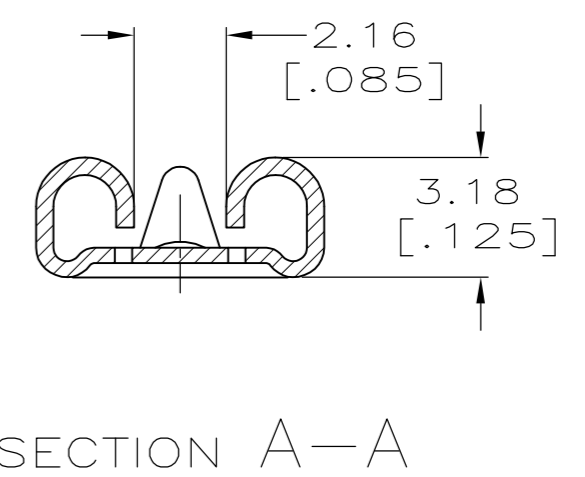
SUGGESTED MATING TAB



- 1 MATL: 1/2H BRASS OR NICKEL PL STEEL.
 - 2 NO BURRS PERMISSIBLE AT HOLE.
 - 3 MUST BE FLAT WITHIN 0.076 [0.003] OVER THIS LENGTH.
 - 4 TIN PLATING IS REQUIRED ON BRASS WHEN TERMINAL TEMP. IS OVER 225° F
 - 5 HOLE MUST BE SYMMETRICAL ABOUT TAB C WITHIN 0.076 [0.003]
- * TO BE USED ONLY WHEN SHOULDER IS ELIMINATED.

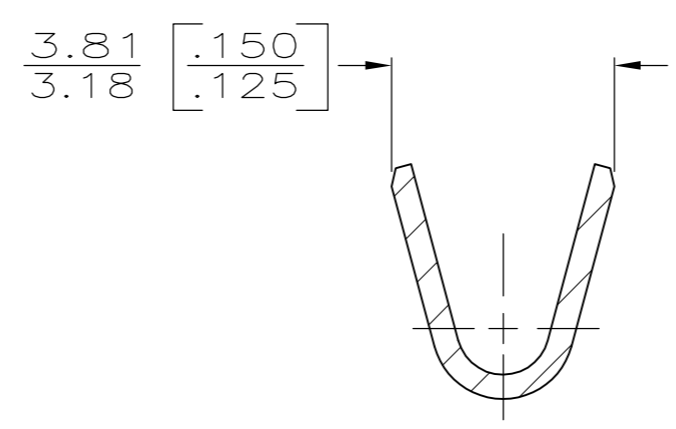


- 1 CONTINUOUS STRIP ON REELS.
- 2 STRESS RELIEVE PART, WILL HAVE HIGHER INSERTION FORCES.
- 3 PRELIMINARY - NOT FOR PRODUCTION
- 4 PREPRODUCTION - FASR REQUIRED

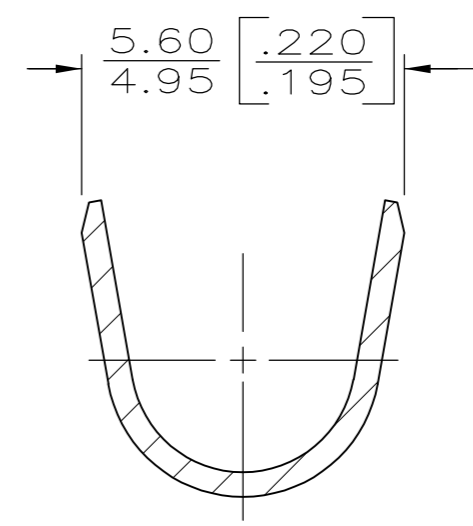


SECTION D-D

SECTION A-A



SECTION B-B



SECTION C-C

FINISH	INSULATION RANGE	WIRE SIZE	PART NO
PRE-TIN PL.	2.29-3.94 [.090-.155] DIA	[#18-#14] AWG	63854-4
TIN PLATE	2.29-3.94 [.090-.155] DIA	[#18-#14] AWG	63854-3
TIN PLATE	2.29-3.94 [.090-.155] DIA	[#18-#14] AWG	63854-2
-	2.29-3.94 [.090-.155] DIA	[#18-#14] AWG	63854-1

THIS DRAWING IS A CONTROLLED DOCUMENT.		DWN	JR RUTH	4/28/95	 TE Connectivity RECEPTACLE, POSITIVE LOCK, 6.35 [.250] SERIES			
DIMENSIONS:		CHK	MS FEHER	4/28/95				
mm [INCHES]		APVD	R REINER	4/28/95				
TOLERANCES UNLESS OTHERWISE SPECIFIED:		PRODUCT SPEC						
0 PLC	± -	APPLICATION SPEC	114-2061		SIZE	CAGE CODE	DRAWING NO	RESTRICTED TO
1 PLC	± -				A2	00779	C=63854	-
2 PLC	± 0.25 [.010]				CUSTOMER DRAWING			
3 PLC	± -				SCALE	SHEET	REV	
4 PLC	± -				5:1	1 of 1	N1	
ANGLES	± -							
FINISH	SEE TABLE							